



iPlay
Eyewear for play

#letsplay

Introducing iPlay

Affordable and Adjustable Kids Eyewear

Design

Our frames are designed to fit children ages from 1 to 9 years. Our adjustable bridge fittings are perfectly shaped to the contours of the nose. Our frames change as they increase in size, just like children.

All frames are supplied with a matching adjustable headband.

Eye Health

Correctly fitted eyewear is essential to eye health. Typically young people spend more time gazing up than adults. Our eyewear is designed to accommodate this fitting need.

Colour and Materials

Our frames have a beautiful clarity, sparkle and shine. We use a superior polyamide to create colour with a glass like appearance.

The material offers more than just great looks, it is very tough and resistant to heat and cleaning solutions. Your eyewear will not dull or break after using cleaning solutions and it will not fail with rapid expansions or contractions resulting from sudden temperature change.

Experience

Our design consultants are Spec-Care Ltd, the award winning team based in Exeter UK. Industry leaders, specialising in paediatric spectacle frame fitting and adaptations. Spec-Care was recognised by the parliamentary trust which represented optical providers at the recent NHS 75th birthday celebrations.

Environment

From our supply chain to our EPC A carbon net zero office at Exeter Science Park, we have the environmental impact of our business at heart.

We are targeting single use plastic free trading and are nearly there. If we use plastics, it's because of their pre-existence in the supply chain or a specific need to deliver items safely. We kindly ask, where possible packaging is reused and recycled responsibly at end of life.

Our 2024 collections are packaged in card drawer boxes, lovingly designed as the perfect iPlay case.



Imperium - Myopia Management lens for iPlay frames

Caledonian Optical is a pioneering optical lens manufacturing company based in Aberdeen, Scotland with over 40 years of experience dedicated to seamlessly blending cutting-edge solutions with a commitment to sustainability and partnership.

Imperium, our innovative myopia management lens offers an essential solution in a world where myopia affects nearly 30% of the population.

With children increasingly exposed to electronic devices from a young age, their visual health is at risk.

NEW approved glazing partner



Pioneering Ophthalmic Technology

Imperium's unique design not only provides clear and sharp central vision but also effectively slows down myopia progression and combats ocular elongation.

Backed by extensive research and a European clinical trial, Imperium reduces myopia progression by 39% compared to standard lenses.

Elevate your myopia management services with Imperium and ensure a brighter future for young eyes. Contact Caledonian Optical for a free trial today via www.caledonianoptical.com/contact or 01224 596 006

imperium.
Myopia Management Lenses





iPlay 2808

**Qualifies for small frame supplement*

Introducing the iPlay 2808, our early years frame perfectly designed to cater for the optical needs of our youngest children. This functional and perfectly designed shape aims to enhance the joyful faces of babies and toddlers all the way through their first school years.

The frame design prioritises positioning the child's eye centrally behind the lens to maximize the benefits of the prescription, ensuring optimal visual correction and comfort.

For the smallest frames, we've incorporated super comfort mono-design bridges, providing essential support for spectacles on small noses. As the design gets larger, the bridge shape adapts, transitioning to our broader range of frame designs. Ensuring comfort and stability as children grow.

Available in 4 sizes and 6 colours, ranging from soft pastels to vibrant red and aqua, the iPlay 2808 offers the perfect blend of cute style and practicality. No wonder model 2808 is a favourite among both parents and young wearers alike.

**AGE
1-6**



All frames include headband
**Qualifies for small frame supplement*



Light Blue

IP280837/BLU
IP280839/BLU
IP280841/BLU
IP280843/BLU



Light Lilac

IP280837/LIL
IP280839/LIL
IP280841/LIL
IP280843/LIL



Light Green

IP280837/GRN
IP280839/GRN
IP280841/GRN
IP280843/GRN



Light Pink

IP280837/PNK
IP280839/PNK
IP280841/PNK
IP280843/PNK



Deep Red

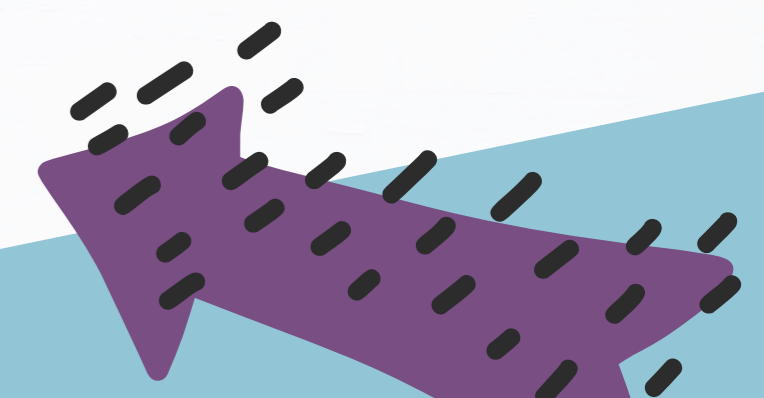
IP280837/DRD
IP280839/DRD
IP280841/DRD
IP280843/DRD



Deep Aqua

IP280837/AQU
IP280839/AQU
IP280841/AQU
IP280843/AQU

Sizes:
37-14-118*
39-14-118*
41-14-118*
43-15-130





iPlay 2801

Model 2801 is a timeless classic rectangular shape, specifically designed to fit children. With added soft curves, this design complements the playful faces of wearers, making it both stylish and practical.

Available in 3 sizes and 7 carefully selected colours, the iPlay 2801 has quickly become a favourite in playgrounds everywhere.

Notably, each frame boasts two bridge height settings and multi-adjustment sides, ensuring a comfortable and secure fit for children of varying ages and facial shapes.

iPlay sides have a unique double locking system. Conciously designed to give extra security so the curl tips remain securly in place and should not need replacing. The primary locking system is two studs protruding from the side which fit snugly in to the curl tip and the secondary locking is by the visable screw.



All frames include headband



Light Blue

IP280142/BLU
IP280144/BLU
IP280146/BLU



Light Lilac

IP280142/LIL
IP280144/LIL
IP280146/LIL



Light Green

IP280142/GRN
IP280144/GRN
IP280146/GRN



Light Grey

IP280142/GRY
IP280144/GRY
IP280146/GRY



Deep Red

IP280142/DRD
IP280144/DRD
IP280146/DRD



Deep Blue

IP280142/DBL
IP280144/DBL
IP280146/DBL



Deep Violet

IP280142/DVL
IP280144/DVL
IP280146/DVL

Sizes:
42-15-130
44-15-130
46-15-130

AGE
4-9





iPlay 2806

Model 2806 embodies style, combining the flowing curves of grown-ups eyewear, with carefully incorporated features designed to fit kids perfectly.

Available in 3 sizes and 7 stunning colours, the iPlay 2806 strikes a perfect balance between style and fit. The design reflects a meticulous attention to detail, ensuring that children not only look great but also feel comfortable and confident wearing their glasses.

With its elegant yet functional design, the iPlay 2806 boasts 2 bridge height settings and multi-adjustment sides creating a seamless integration of style and practicality. The 2806 has become a top choice for parents seeking both fashion and functionality in children's eyewear.

iPlay sides have a unique double locking system. Consciously designed to give extra security so the curl tips remain securely in place and should not need replacing. The primary locking system is two studs protruding from the side which fit snugly in to the curl tip and the secondary locking is by the visible screw.

AGE
4-9



All frames include headband



Light Grey

IP280642/GRY
IP280644/GRY
IP280646/GRY



Light Lilac

IP280642/LIL
IP280644/LIL
IP280646/LIL



Light Green

IP280642/GRN
IP280644/GRN
IP280646/GRN



Light Pink

IP280642/PNK
IP280644/PNK
IP280646/PNK



Deep Red

IP280642/DRD
IP280644/DRD
IP280646/DRD



Deep Blue

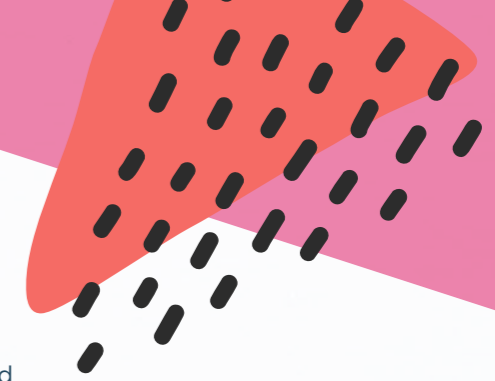
IP280642/DBL
IP280644/DBL
IP280646/DBL



Deep Violet

IP280642/DVL
IP280644/DVL
IP280646/DVL

Sizes:
42-15-130
44-15-130
46-16-130



Highly durable kids frames that adapt with your child



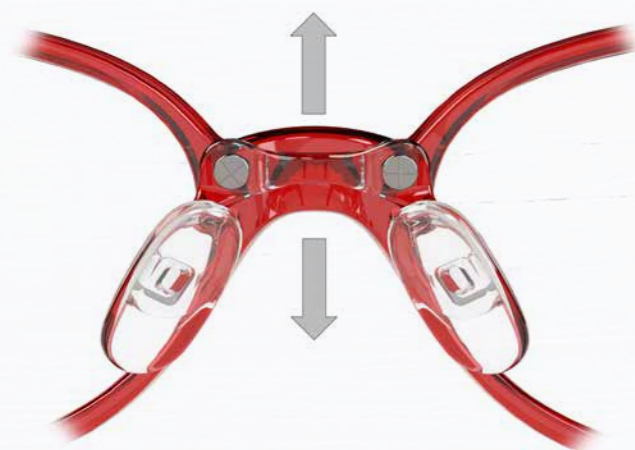
Fitting all faces

iPlay frame fit geometry, frames designed for children. Included headband supports a secure fit.

Marketing material

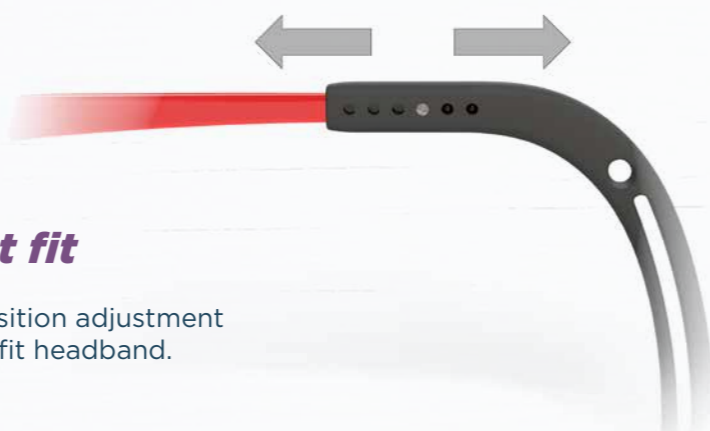
Visit bondeyeoptical.co.uk/iplay-pos to order your free POS below and a full suite of downloadable content is also available here.

Please contact the team if you require a full image bank to support you with your social media campaigns.



A perfect fit

iPlay multi-position adjustment and free easy fit headband.



Adapts with your child

iPlay frames adapt to growing faces.



Spare Parts

Customise your iPlay with our parts service. We have a full range of spare parts available on request. Most of these are at no additional charge and a free parts tub and screwdriver are included in your first order.



Posters



Window Sticker



Window Display Cube



The logo for iPlay, featuring the word 'iPlay' in a colorful, rounded font. The 'i' is green, 'P' is blue, 'l' is red, and 'ay' is orange. It is set within a white oval shape.

iPlay

iplay-eyewear.com

#letsplay

Distributor contact:

bondeye[®]

The home of over 3,000 optical products

T: 0121 772 3888

E: sales@bondeyeoptical.co.uk

W: www.bondeyeoptical.co.uk

Bespoke to fit service:

Visit our website to download your form

www.bondeyeoptical.co.uk/iplay-bespoke



IPLAYBRO24